

N.W. 1/4
SECTION 28, T.6N., R.2W., S.L.B. & M.

IN WEBER COUNTY
SCALE 1" = 200'

TAXING UNIT: 53,377

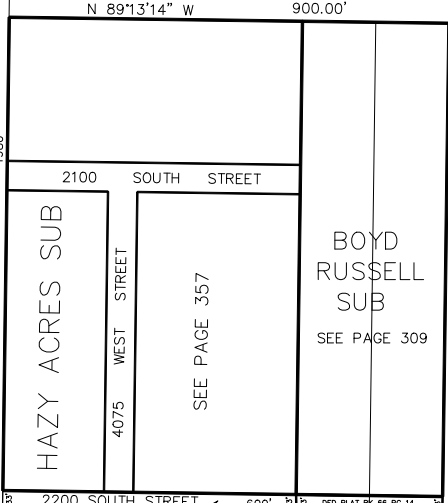
SEE PAGE 57

BOB ROPELATO
& WF PATRICIA
{150780044}
33,930 SQ FT (EX RD)
TU: 53

290.33'
150780077
21-AUG-2000
REPELATO TRUST
TU: 53
345.48'
290.33'
150780109
BOB ROPELATO
& WF PATRICIA
{150780109}
TU: 53
345.48'
186.72'
170.0'
125.00'
150.0'
180.0'
125.00'
BOBBY MATHEW ROPELATO ETAL
{150780037}
30,600 SQ FT
TU: 53

A JAY SMITH = 4.21% ETAL
150780110
55.69 AC±
TU: 53

A JAY SMITH = 4.21% ETAL
150780035
57.7 AC±
TU: 53



N 89'13'14" W
WEBER COUNTY
(150780112)
19,800 SQ FT
TU: 53

SEE PAGE 78-3

WEST STREET
40 CHAINS WEST
3900

SEE PAGE 78-1

SEE PAGE 80

